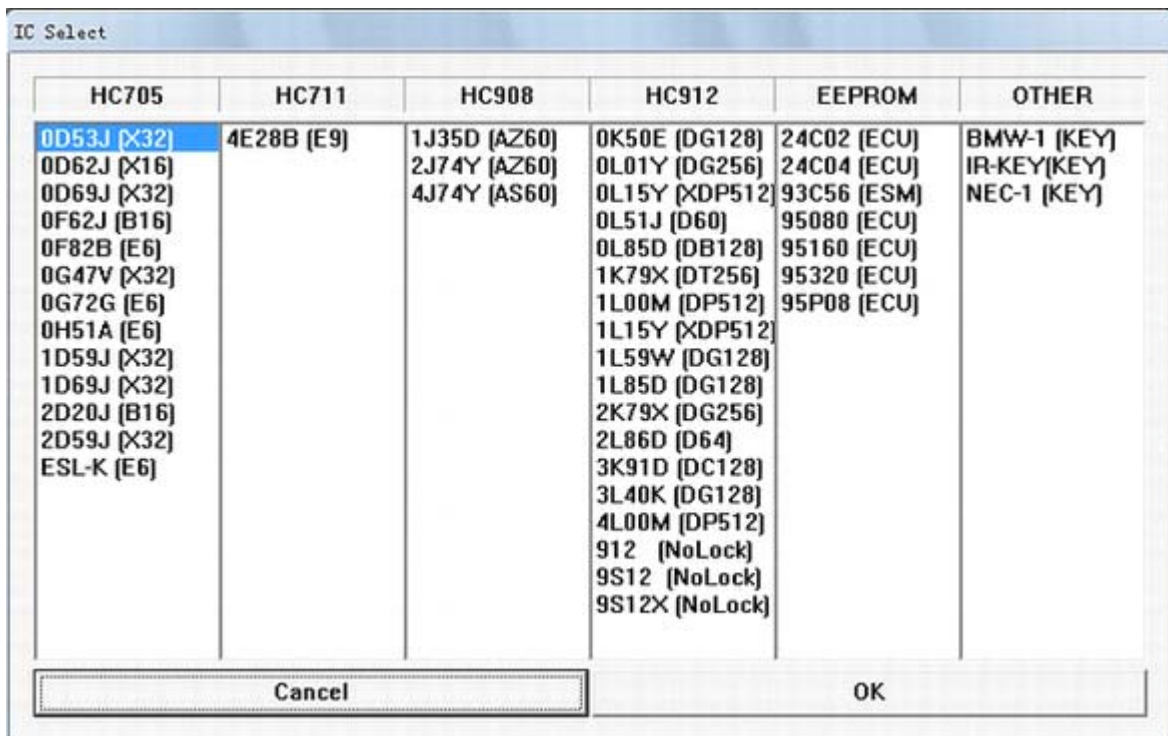


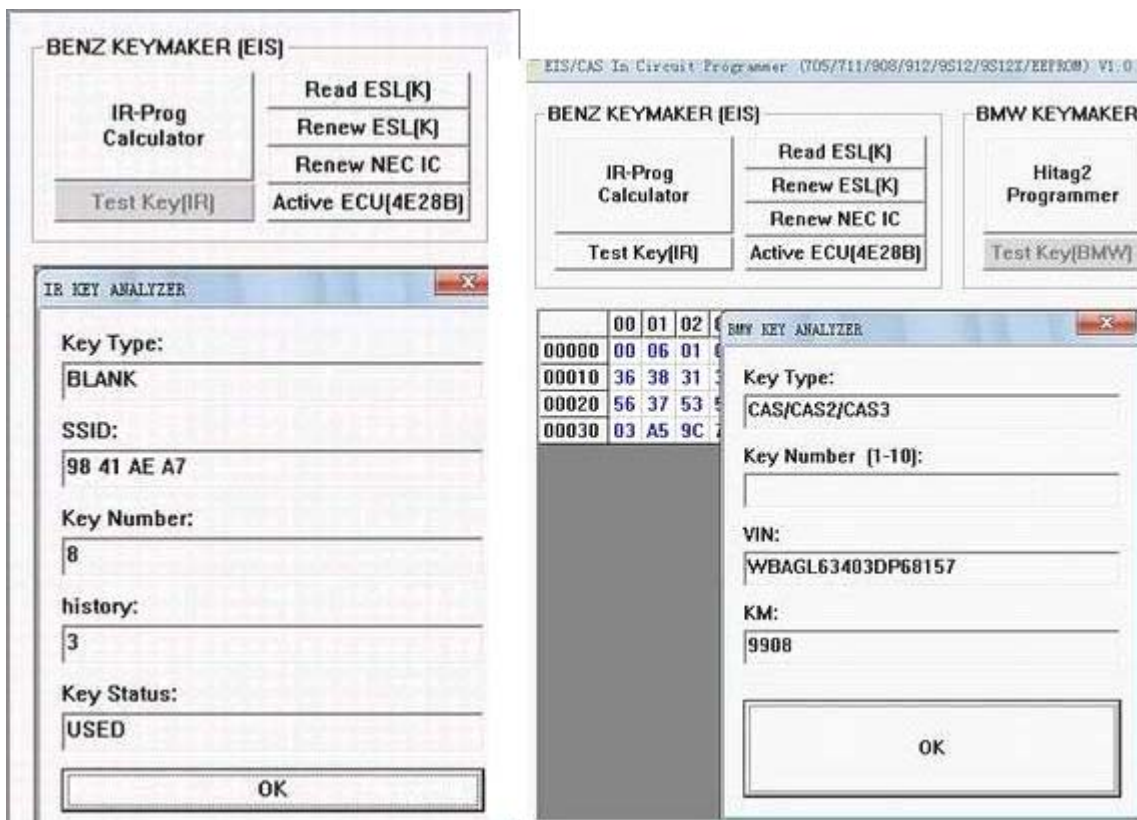
AK400 User manual

AK400 is so far the most usable chipsets, convenient operation, safest top key programmer., with functions as following:

1. MOTOROLA Single-part machine free of removing and reading ,supporting the most free of removing MCU of MOTOTOLA single-part machine.



2. Benz BMW Key testing



3. BENZ IR Key calculating and KEY NEC erasing , writing key datas

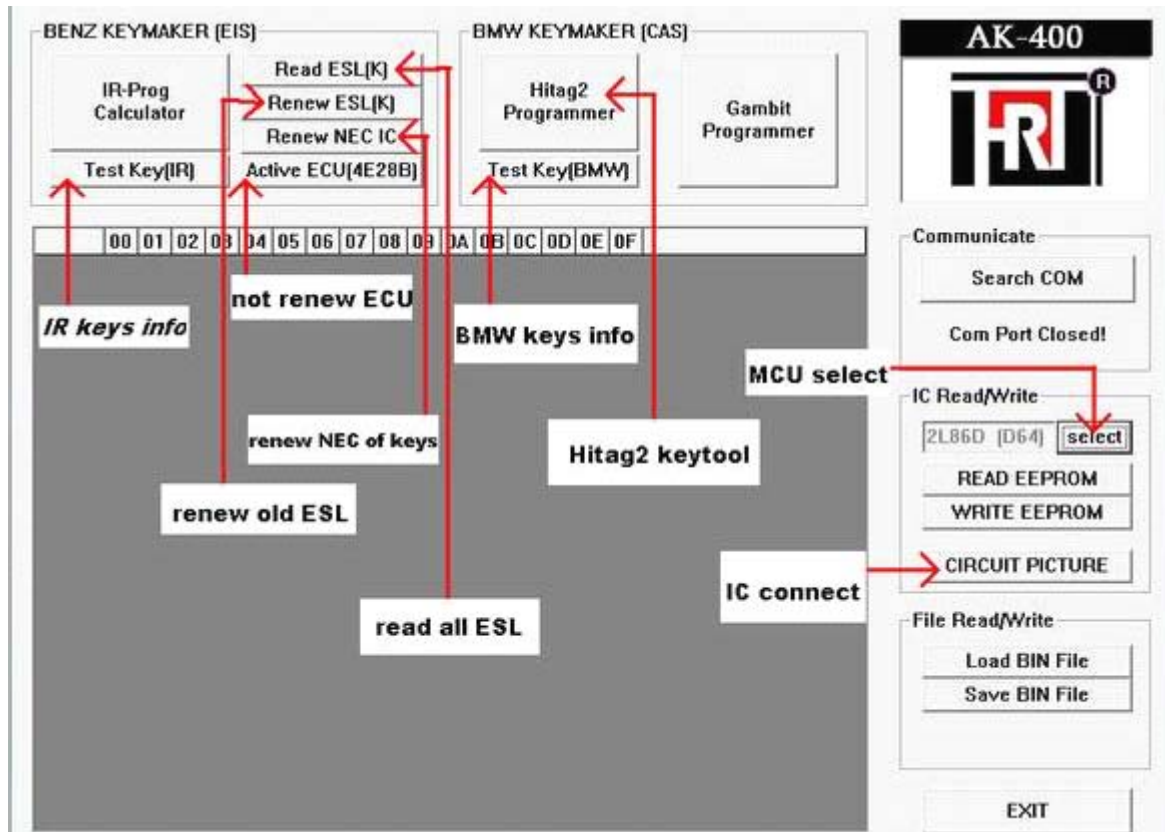
The screenshot shows the 'Ir programmer' software interface. Handwritten annotations include: a red arrow pointing to 'EIS' labeled 'car type'; a purple arrow pointing to 'ECU' labeled 'EEPROM or flash for ECU'; and a red arrow pointing to the 'Process' button labeled 'make data of keys and EIS and ECU and ESL or ESM'. Below the main interface, three green boxes labeled 'Big Old', 'Chrome', and 'Small' each contain a 'Write' button and an image of a key. A large red text overlay reads 'write key data to NEC via IR'. At the bottom, a box contains the text 'RENEW KEY Renew NEC of keys'.

4. BMW CA3 related key making

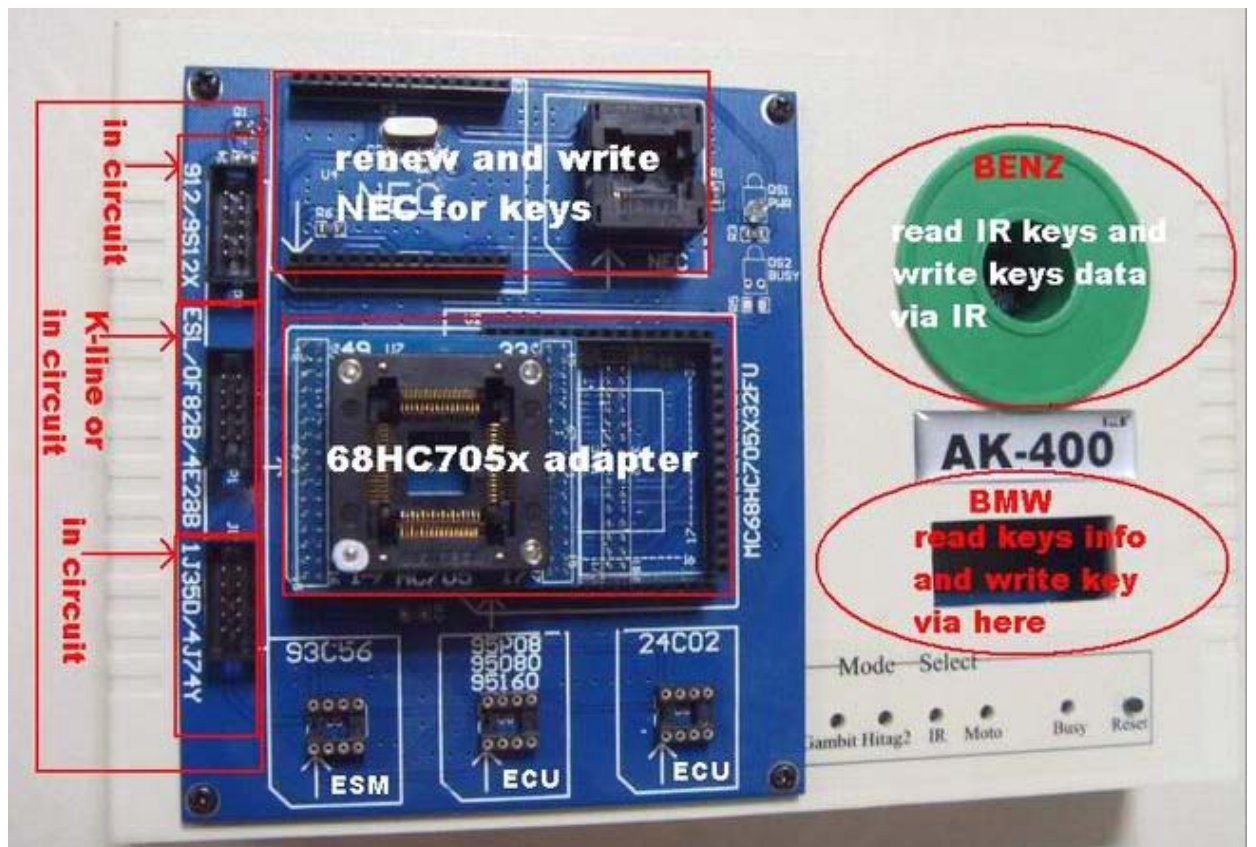
The screenshot shows the 'HITAG-2 key memory' software interface. Handwritten annotations include: a red arrow pointing to the 'Security Key' section labeled 'PCF7936'; a red arrow pointing to the 'Operation mode' section labeled 'PCF7942'; and a red arrow pointing to the 'Save immobilizer dump' button labeled 'after written keys, save and write back to CAS'. The interface includes sections for 'Transponder memory' (with a table of memory pages), 'Configuration page 3' (with bit settings), 'EEPROM key memory' (with a hex dump), and 'Key generation by immobilizer memory' (with a dropdown menu and buttons).

Identifier	Page	Value	R	W
0189011B	P0			
4D494B52	P1			
20F84F4E	P2			
06AA4854	P3			
465F4F4B	P4			
55555555	P5			
AAAAAAAA	P6			
FFFFFFFF	P7			

AK400 Software framework chart



Hardware framework chart



EIS Electricity connection testing chart



